

- Smart & Compact Design with Great Mobility
- Maintenance-free AC Drive System
- Intelligent Computer Controller System
- On-board Self-Diagnostic Display
- Excellent Safety and Reliability
- Easy Service & Maintenance
- Standard Side Battery Extraction
- Great Comfort and Ergonomic Design
- Easy EPS Steering (for FE3R08-12N)

FE3R N Series

Three-wheel Rear Drive Forklift



Capacity:
800kg
1000kg
1200kg

Maximum lifting Height:
3000mm

Overall Width:
880mm

**24Volt
Zapi Controller**



Capacity:
1600kg

Maximum lifting Height:
3000mm

Overall Width:
1000mm

**48Volt
Curtis Controller**

Variable wheelbase design:
Mast tilting function realised through the movement of front axle



NOBLELIFT CHINA

Add:528 Changzhou Road,Taihu Sub-district, Changxing, Zhejiang 313100 China
Tel:86-572-6210817 6210311
Fax:86-572-6210777 6128612
Email:info@noblift.com
Http:www.noblift.com www.noblift.cn

NOBLELIFT RUSSIA

ООО «Ноблелифт Рус»
194292, Санкт-Петербург
Домостроительная ул. 4А офис 301
Бизнес-центр «Парнас»
Тел.: +7-800-700-28-97
Email: sales@noblift.com.ru
Http: www.noblift.com.ru

NOBLELIFT EUROPE GMBH

Add:Borsigstrasse 9-93082 Barbing
Germany
Tel:+49 9401 607930
Fax:+49 9401 6079329
Email:mail@noblift-europe.com
Http:www.noblift-europe.com

NOBLELIFT NORTH AMERICA CORP

Add:2461 S Wolf Road Des Plaines,
IL 60018
Tel:001-847-595-7100
Fax:001-847-595-7200
Email:sales@noblift.com
Http:www.noblift.us



Official website



Our Wechat



NOBLELIFT
Material Handling

We promise,
We deliver

FE3R N Series

ISO9001 / ISO14001
//2019.01



Three-wheel Rear Drive Forklift 800-1600kg



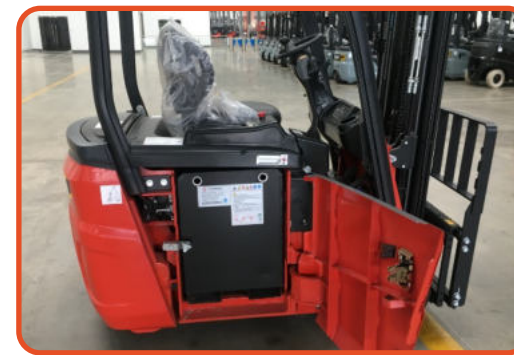
NEW *Noblift Products*
ARRIVAL



■ Battery compartment with rollers for 08-12N



Fully openable covers for easy service and maintenance. Standard Side Battery Extraction for easy battery replacement.



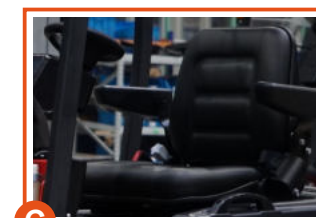
■ Battery compartment with fork pockets for 16N



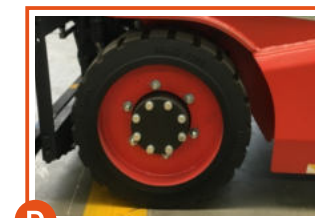
A Front LED Lights, Steering lights, Rear Combination Lights, Warning light standard, safe to work in dark environment such as containers or in the night.



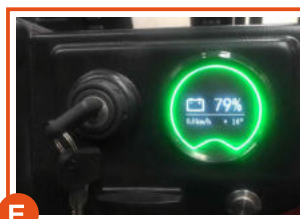
B-C Small Diameter Steering Wheel with Spinner Knob, Adjustable Steering wheel position and seat to optimize the comfortness of the operator for long time operation.



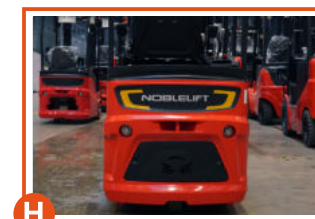
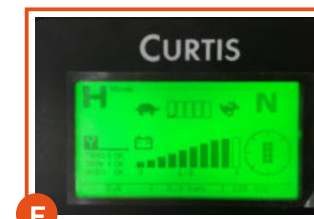
C Optional different battery capacities for different operation needs, optional Aquamatic battery self-filling system for easy battery maintenance.



D Small Diameter Solid Front Wheels for easy and smooth motion.



E-F Intelligent ZAPI or Curtis Self-diagnostic display for easy operation and maintenance, Standard Rear Wheel Position Sensor & Display with Speed Reduction at Turning.



H Extremely compact design with small width and turning radius for easy operation in confined spaces.

FE3R08-12N Mast Table								
Designation	Lift height h_1 (mm)	Free lift h_2 (mm)	Closed mast height h_3 (mm)	Extended mast height h_4 (mm)	Tilt forward/backward α/β (°)	Capacity table(kg) C=500mm without sideshift, single solid tyres		
						FE3R08N	FE3R10N	FE3R12N
Two-stage ZT	2500	95	1715	3365	3/5	800	1000	1200
	2700	95	1815	3565	3/5	800	1000	1200
	3000	95	1965	3865	3/5	800	1000	1200
	3300	95	2155	4165	3/5	750	1000	1200
	3500	95	2215	4365	3/5	720	920	1050
	3700	95	2315	4565	3/5	700	850	950
Two-stage ZZ	4000	95	2515	4865	3/5	650	800	900
	2500	875	1715	3365	3/5	800	1000	1200
	2700	875	1815	3565	3/5	800	1000	1200
	3000	1125	1965	3865	3/5	800	1000	1200
	3300	1275	2155	4165	3/5	750	1000	1200
	3500	1375	2215	4365	3/5	720	920	1050
Three-stage DZ	3700	1475	2315	4565	3/5	700	800	950
	4000	1625	2515	4865	3/5	650	750	900
	4000	1061	1900	3565	3/5	/	750	900
	4350	1161	2000	3790	3/3	/	650	800
	4500	1211	2050	3890	3/3	/	550	700
	4800	1311	2150	4090	3/3	/	450	550
5000	1411	2250	4240	3/3	/	400	450	

Free lift height (no load-backrest) +305mm

FE3R16N Mast Table								
Designation	Lift height h_1 (mm)	Free lift h_2 (mm)	Closed mast height h_3 (mm)	Extended mast height h_4 (mm)	Tilt forward/backward α/β (°)	Capacity table(kg) C=500mm without sideshift, single solid tyres		
						FE3R08N	FE3R10N	FE3R12N
Two-stage ZT	2500	105	1747	3480	3/6	1600		
	2700	105	1847	3680	3/6	1600		
	3000	105	1997	3980	3/6	1600		
	3300	105	2147	4280	3/6	1600		
	3500	105	2247	4480	3/6	1600		
	3700	105	2347	4680	3/6	1500		
Two-stage ZZ	4000	105	2547	4980	3/3	1450		
	4300	105	2697	5280	3/3	1350		
	4500	105	2797	5480	3/3	1250		
	5000	105	3072	5980	3/3	1150		
	2500	792	1747	3480	3/6	1600		
	2700	892	1847	3680	3/6	1600		
Three-stage DZ	3000	1042	1997	3994	3/6	1600		
	3300	1192	2147	4294	3/6	1600		
	3500	1292	2247	4494	3/6	1500		
	3700	1392	2347	4694	3/6	1500		
	4000	1592	2547	4994	3/3	1450		
	4300	1742	2697	5294	3/3	1400		
Three-stage DZ	4500	1842	2797	5494	3/3	1300		
	4800	1992	2947	5794	3/3	1200		
	5000	2092	3047	5994	3/3	1150		
	5500	2242	3197	6294	3/3	1050		
	6000	2392	3347	6594	3/3	950		

Free lift height (no load-backrest) +434mm

N Battery Balance Weight Type Forklift (VDI 2198)					
Identification					
1.1	Manufacture(abbreviation)	NOBLELIFT			
1.2	Manufacturer's type designation	FE3R08N	FE3R10N	FE3R12N	FE3R16N
1.3	Drive:electric(battery or mains),diesel,petrol gas,manual	Electric	Electric	Electric	Electric
1.4	Type of operation(hand,pedestrian,standing,seated,order-picker)	Seated	Seated	Seated	Seated
1.5	Load capacity/rated load	Q(kg)	800	1000	1200
1.6	Load centre distance	C(mm)	500	500	500
1.8	Load distance,centre of drive axle to fork	x(mm)	265	265	265
1.9	wheelbase	y(mm)	841/923	951/1033	991/1073
Weights					
2.1	Service weight incl. battery(see line 6.5)	kg	1800	1910	2080
2.2	Axle loading ,laden front/rear	kg	2300/300	2600/310	2950/330
2.3	Axle loading,unladen front/rear	kg	770/1020	850/1060	880/1220
Wheels - Chassis					
3.1	Type:solid rubber,supereastic,pneumatic,polyurethane	solid rubber/polyurethane	solid rubber/polyurethane	solid rubber/polyurethane	solid rubber/solid rubber
3.2	Tyres size,front	13x4 1/2x8	13x4 1/2x8	13x4 1/2x8	18x7x12 1/8
3.3	Tyres size,rear	φ250x82	φ250x82	φ343x140	18x7-8
3.5	Wheels,number front/rear(*=driven wheels)	2/1*	2/1*	2/1*	2/1*
3.6	Track width,front	b _f (mm)	765	765	822
3.7	Track width,rear	b _r (mm)	/	/	/
Basic Dimensions					
4.1	Mast/fork carriage tilt forward/backward	α/β (°)	3/5	3/5	3/6
4.2	lowered mast height	h ₁ (mm)	1965	1965	1997
4.3	Free lift	h ₂ (mm)	95	95	105
4.4	Lift height	h ₃ (mm)	3000	3000	3000
4.5	Extended mast height	h ₄ (mm)	3865	3865	3980
4.7	Overhead load guardheight	h ₅ (mm)	1975	1975	2060
4.8	Seat height/standing height	h ₆ (mm)	980	980	1050
4.12	Coupling height	h ₇ (mm)	540	540	570
4.19	Overall length	l ₁ (mm)	2290	2400	2785
4.20	Length to face of forks	l ₂ (mm)	1370	1480	1865
4.21	Overall width	b ₁ (mm)	880	880	1000
4.22	Fork dimensions	s/e _l (mm)	35/100/920	35/100/920	35/100/920
4.24	Fork carriage width	l ₃ (mm)	825	825	980
4.31	Ground clearance ,laden,under mast	m ₁ (mm)	80	80	92
4.32	Ground clearance,centre of wheelbase	m ₂ (mm)	90	90	97
4.33	Aisle width for pallets 1000x1200 crossways	Ast ₁ (mm)	2760	2920	3222
4.34	Aisle width for pallets 800x1200 lengthways	Ast ₂ (mm)	2878	3038	3312
4.35	Turning radius	Wa(mm)	1160	1320	1520
Performance Data					
5.1	Travel speed ,laden/unladen	km/h	8/9	7.5/9	7/9
5.2	Lift speed ,laden/unladen	m/s	0.17/0.28	0.16/0.22	0.15/0.22
5.3	lowering speed ,laden/unladen	m/s	0.23/0.22	0.16/0.20	0.17/0.20
5.5	Drawbar pull ,laden/unladen S2 60 min	N	1500/1700	1500/1700	1800/2300
5.7	Max.Gradient performance ,laden/unladen S2 5 min	%	6/10	6/10	10/13
5.10	Service brake	hydr.	hydr.	hydr.	hydr.
E-Motor					
6.1	Drive motor rating S ₂ 60 min	kW	2.5	2.5	3
6.2	Lift motor rating at S ₃ 15%	kW	3	3	3
6.3	Battery standard	DIN	DIN	DIN	DIN
6.4	Battery voltage,nominal capacity K5	V/Ah	24/280 (360/400)(Optional)	24/420 (480/540)(Optional)	24/420 (480/540)(Optional)
6.5	Battery weight	kg	280/364/428	392/440/488	392/440/488
Other Details					
8.1	Type of drive control	MPa	AC	AC	AC
8.2	Operating pressure for attachments	MPa	11.5	13.5	15.5
8.3	Oil volume for attachments	l/min	16	16	16
8.4	Sound level at driver's ear according to EN 12 053	dB(A)	70	70	70